



RETINA Vision and Learning Group

Department of Computer Engineering
Bilkent University



- **Current research interests:**

- Multimedia data mining
- Object and face recognition
- Association of multi-modal data
- Remote sensing image analysis
- Medical image classification
- Retrieval and analysis of large image and video archives
- Human action recognition for patients and elderly people
- Automatic transcription of Ottoman documents
- Automatic documentary creation: tracking the evolution of news on time

- **Current sponsored projects:**

- Semantic Multimodal Analysis of Digital Media
(Sponsored by TUBITAK and European Commission, 2004-2008)
- Probabilistic and Structural Approaches to Image Understanding, Classification and Retrieval, and Applications to Remote Sensing and Medical Image Analysis
(Sponsored by TUBITAK CAREER Grant, 2005-2010)
- Multimedia Data Mining: Integration of Multi-modal Data for a Better Retrieval and Analysis
(Sponsored by TUBITAK CAREER Grant, 2005-2010)
- Hierarchical Classification, Mining and Semantic Retrieval in Remote Sensing Image Archives
(Sponsored by European Commission FP6 Marie Curie Grant, 2005-2007)

- **We are also participating in:**

- European Commission COST 292 Action on Semantic Multimodal Analysis of Digital Media
- European Commission FP6 Network of Excellence on Multimedia Understanding Through Semantics, Computation and Learning (MUSCLE)
- U.S. NIST TREC Video Retrieval Evaluation (TRECVID)

Research assistantships for graduate study on computer vision and pattern recognition towards M.S. and Ph.D. degrees are available.

- **Contact:**

RETINA Vision and Learning Group
Department of Computer Engineering
Bilkent University

Phone: (312) 290 3405 (Asst. Prof. Selim Aksoy)
(312) 290 3143 (Asst. Prof. Pınar Duygulu)

Email: retina@cs.bilkent.edu.tr

URL: <http://retina.cs.bilkent.edu.tr>

anchor

anchor – reporter dialogs

logos

News story



News story

weather

commercials

sports

Video segmentation and classification



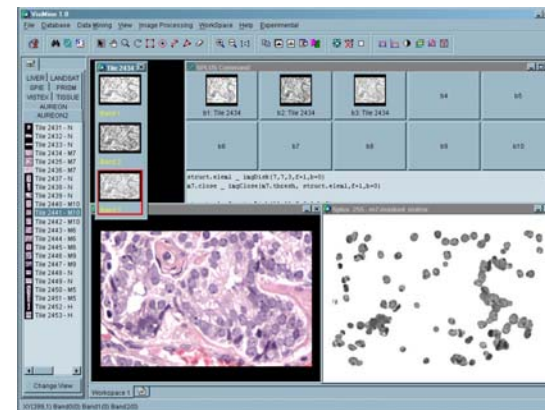
Face detection



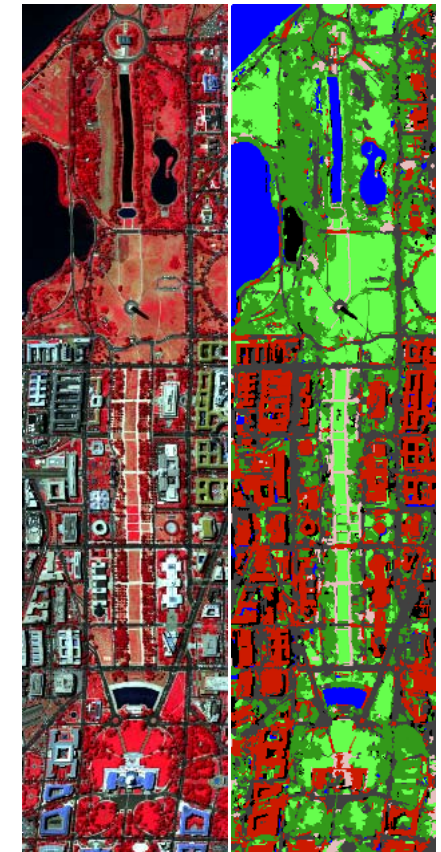
Auto-annotation of images



Face recognition



Medical image analysis



Remote sensing image classification